

The equipment for neurophysiology, epileptology and somnology



Electroencephalographs-records "Encephalan-EEGR-19/26"

ensure effective implementation of a large number of tasks related to monitoring and diagnostics of the brain state. Being transformed electroencephalographs-records can be used as:

- Portable electroencephalograph for mobile application
- Device for EEG monitoring in ICU and ER
- Autonomous EEG-recorder (Holter-EEG) with EEG record onto flash memory card
- Stationary multichannel electroencephalograph with mapping
(see fig. A patient transceiver-recorder with EEG-20 connector for routine EEG studies)
- Multifunctional neuromodular diagnostic system



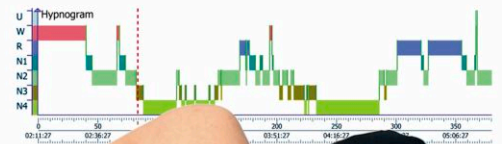
Polysomnographs

range from a portable screening device with pulse oximetry for diagnosis of obstructive sleep apnea (type IV in AASM classification) and a low-cost device for ambulatory apnea screening and cardiorespiratory monitoring (type III) to a classic polysomnograph (type II) and expert class sleep laboratory with synchronous EEG-PSG videomonitoring (type I).

Polysomnographs operate in telemetric or autonomous (EEG/PSG Holter) modes in a hospital ward or at home.

The combination of high-quality recording with maximum patient comfort during sleep.

Meet **AASM** (American Academy of Sleep Medicine) and **CMS** (Center for Medicare & Medicaid Services) guidelines



Cerebral functions monitor "Encephalan-CFM"



An indispensable tool for continuous dynamic analysis of electrical brain activity in newborns (EEG, aEEG, CSA, DSA).

Neuromyoanalyzer "Neuromyan"

Electroneuromyograph provides high-quality record and analysis of myographic signals and evoked potentials.



Biofeedback and neurofeedback equipment



Adjuvant therapy for autonomic dysfunction, cognitive impairment, psychoemotional disorders and ADHD.



FM 538691



MD 540857

www.medicom-mtd.com

Taganrog

MEDICOM MTD

Research & Development Limited Company



The equipment for neurophysiology, epileptology and somnology

Mobile kits of equipment for continuous EEG videomonitoring

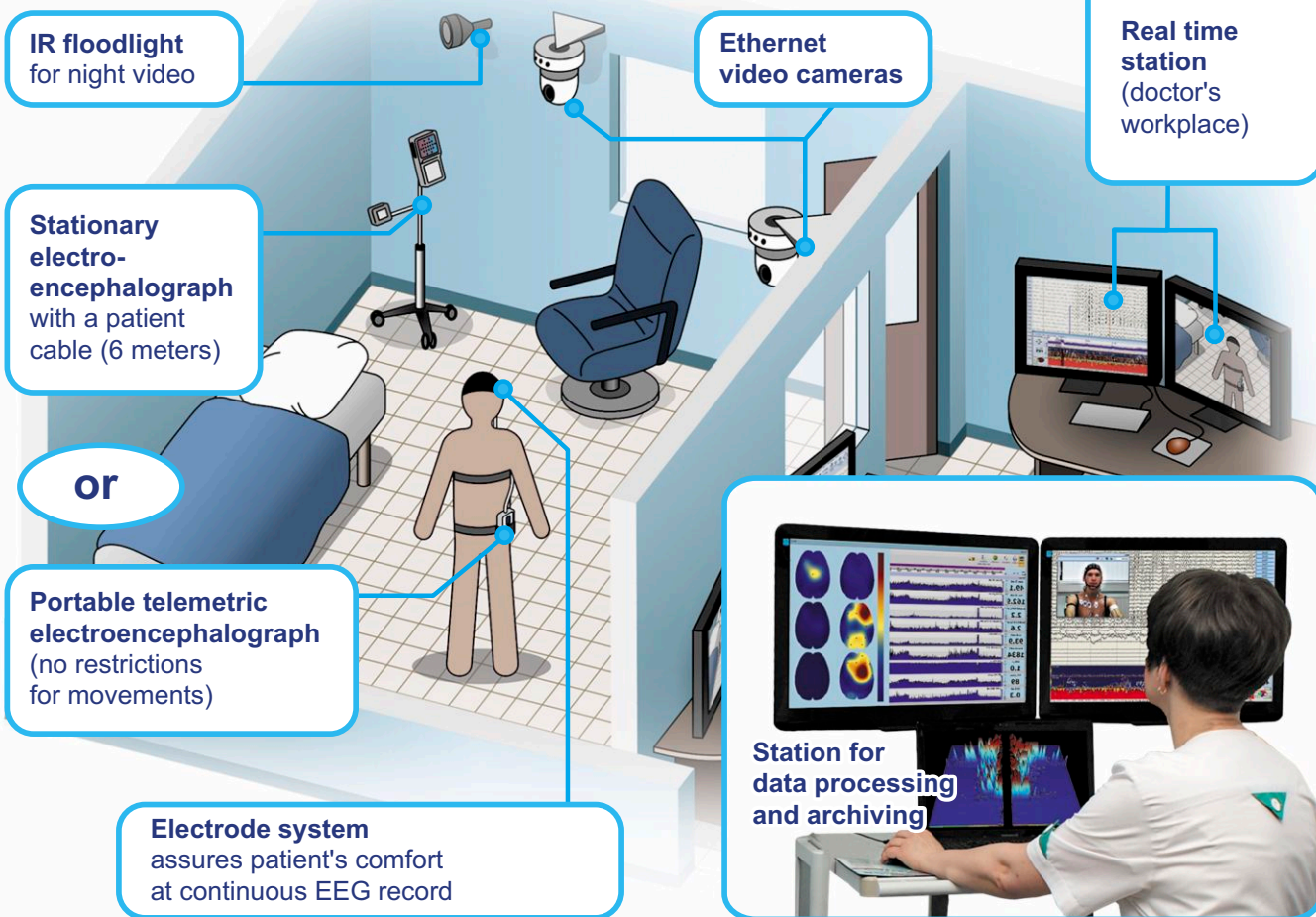
The mobile kit for continuous EEG videomonitoring conducted at patient's home (or in any medical department) fits into one or two compact carrying cases, is easily transported by one person and includes a telemetric portable electroencephalograph-recorder, a phono-, photostimulator, an EEG electrode set, a portable PC and the kit of video equipment.

Studies are carried out in patient-friendly environment. Patients can sleep, eat, read, watch TV, play, etc. A doctor or an assistant monitors their state, operation of the equipment and recording quality.



Stationary complex for continuous EEG videomonitoring

The complex provides audio and video record synchronized with EEG data from high-quality IP cameras (up to 4). Stationary complex for continuous EEG videomonitoring is the gold standard for differential diagnosis and subtle analysis of various epilepsy symptoms.



Medicom MTD Ltd company also offers equipment for

functional diagnostics and sports medicine, rehabilitation using biofeedback, psychological and psychophysiological testing.

More details on our websites:

www.medicom-mtd.com – corporate website

www.reacor.ru – equipment for functional biocontrol with biofeedback

